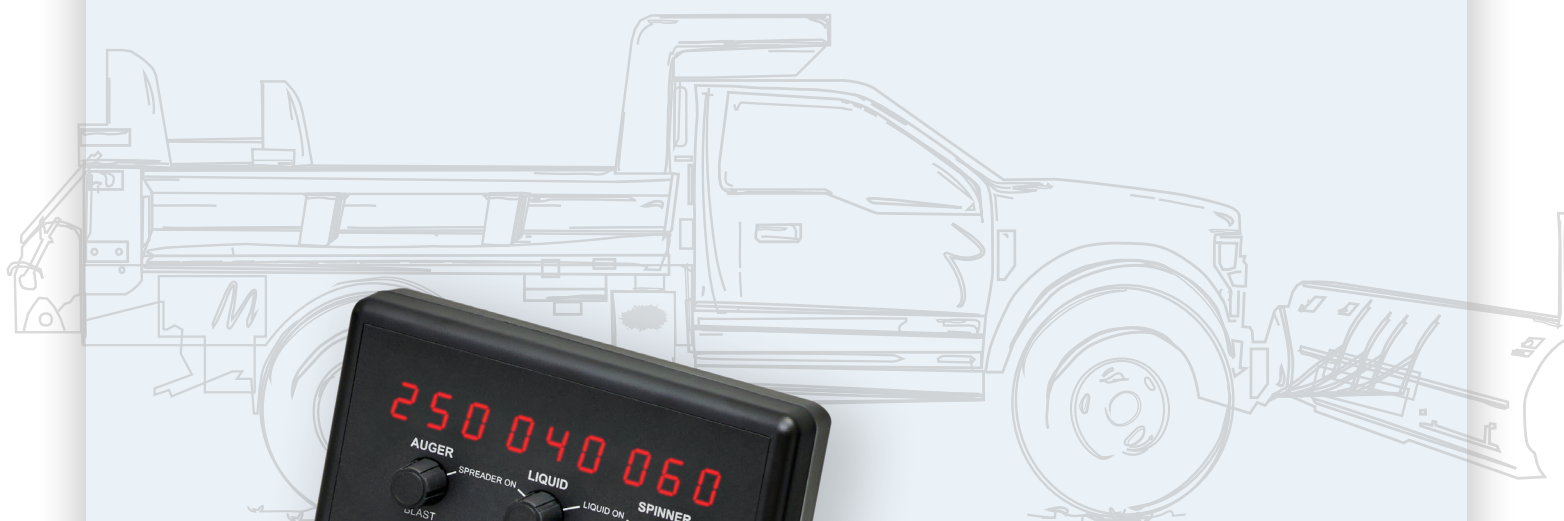


ONE-TON SYSTEM OFFERINGS

SNOW & ICE CONTROL SOLUTIONS



OMNI-SYSTEM™ ONE-TON

APPLICATIONS: Plow, dump, spreader, and pre-wet

- Ground-speed oriented controlled with data logging
- Fully proportional cylinder control with joystick options
- Flow sharing design keeps the cylinders and spreader working with low pump flow



V080 HYBRID SYSTEM

APPLICATIONS: Plow, dump, and spreader

- Combines cable control with electric spreader controls
- Ground-speed oriented controller
- Flow sharing design keeps the cylinders and spreader working with low pump flow



MESP 3020

APPLICATIONS: Dump and spreader

- Perfect hydraulic option when pairing with DC Power Pack driven plow
- Ground-speed oriented controller
- V-body and tailgate options available



MESP 3016/3017

APPLICATION: Spreader

- Ground-speed oriented controller
- Electronic spreader package for snow and ice control vehicles
- Easy installation and simple setup for new or retrofit installation, suitable for spreader setups



MEETING THESE NEEDS

ONE-TON APPLICATION OPTIONS	OMNI-SYSTEM™	V080 HYBRID	MESP 3020	MESP 3016/3017
Electronic Spreader Control	✓	✓	✓	✓
Ground-Speed Orientation	✓	✓	✓	✓
Powder Coat or Stainless Enclosure	✓	✓	✓	✓
Turnkey Installation	✓	✓	✓	✓
Hoist	✓	✓	✓	
Front Plow	✓	✓		
Wing / Scraper Plows	✓	✓		
Liquid Pre-wet Systems	✓			
Data Logging	✓			

OTHER SYSTEM PAIRINGS AND OPTIONS

PRE-WET PACKAGES

APPLICATION: Electrically controlled pre-wet pump

- Designed to be paired with the Omni-System™
- Consistent output able to follow ground-speed control



HYDRAULIC RESERVOIRS

- Available in numerous capacities and configurations
- Powder coated and stainless options available



MANUAL SPREADER VALVES

APPLICATION: Manual spreader control

- A tried-and-true product, our manual spreader valves are considered an old standby as thousands of these have been utilized in snow and ice applications for years.



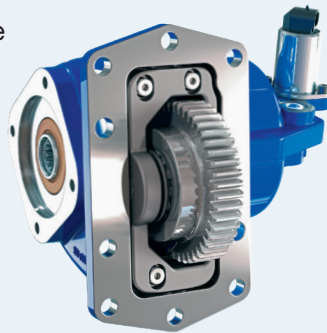
OPEN CENTER SECTIONAL VALVES

- Different spool, control, positioner, and accessory options allow for customization of Muncie Power Products' directional valves.
- Each work section comes preassembled and tested prior to shipment for customer satisfaction.
- Available in air, cable, or electric shift



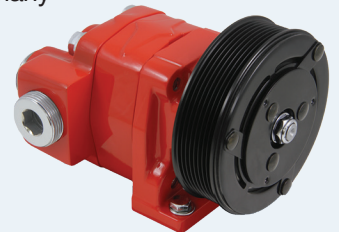
F20 FORD PTO

- Muncie Power's F20 clutch shift power take-off is designed specifically for Ford's new 10R140 10-speed transmission on Class 3-5 Ford trucks.
- This new PTO utilizes the full transmission torque capacity of 300 lbs.ft., and features patent-pending noise abatement technology.



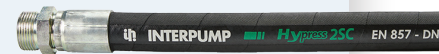
CLUTCH PUMP OPTION

- Preferred option for Allison 1000 and 2000 Series transmissions where torque converter could provide inadequate PTO performance for mobile applications at low vehicle speeds.
- High performance and compact cast iron housings make Muncie Power clutch pumps a good choice for many central hydraulic systems.
- Flow ratings up to 11 GPM and pressures up to 4,350 PSI.



HYDRAULIC HOSE AND FITTINGS

Muncie Power offers the Interpump Fluid Solutions line of hose, fittings, and crimpers. With our primary inventory warehouse in Muncie, Indiana, we are ready to meet the needs of the snow and ice market.



HyPress 2SC



HyPress R17



MUNCIE POWER PRODUCTS
A MEMBER OF THE INTERPUMP GROUP

201 EAST JACKSON STREET • MUNCIE, INDIANA 47305 • 800-367-7867 • MUNCIEPOWER.COM/SNOW