

PRODUCT GUIDE

POWER TAKE-OFFS AND
HYDRAULIC COMPONENTS



A MEMBER OF THE



TABLE OF CONTENTS

Introduction

Power Take-offs by Transmission

Fluid Power

Fluid Conveyance

Valves | Accessories

Cylinders

Reservoirs | Filters

Kits | Consoles | Controls

Technology Solutions

Resources

Innovation Quality Service	2
Aisin	4
Allison	5
Detroit Diesel	10
Eaton/Fuller.....	11
Ford	14
Mack	16
PACCAR.....	20
Volvo	22
Split Shaft	23
Gear Pumps	24
Clutch Pumps	25
Optimum Gear Pumps Motors	26
Refuse Pumps.....	27
Dump & Hoist Pumps.....	28
Fixed Displacement Piston Pumps.....	28
Variable Displacement Piston Pumps.....	30
Low Speed High Torque Motors.....	31
Braided Hose	32
Braided Fittings.....	33
Spiral Hose	34
Spiral Fittings.....	35
Inlet/Suction Hose Specialty & Application Hose	36
Directional Control Valves	38
Load Sense Valves.....	39
Accessory Valves	40
Pin-Pin Trunnion.....	41
Metal Round & Upright Steel Box Polyethylene Box & Upright.....	42
Return Line Tank Top Return Line High Pressure.....	43
Wet Line Kits Combo Kit II	44
Control Consoles	45
Cable Controls	45
Electronic Spreader Systems	46
Hydraulic Indicator Display & Switches	47
Muncie Start®	47
SPD-2000 Series.....	47
DC Power Packs	47
Locations	48
M-Power Training Calculators	50



Since 1935, Muncie Power Products has taken pride in providing unparalleled customer service to each and every customer. As a leading manufacturer of power take-offs and hydraulic components—as well as a member of the Interpump Group—Muncie Power has the ability to provide nearly every major component in a hydraulic system with the quality and reliability our customers have come to depend on. Customers who come to Muncie Power understand that we put people first—ours and yours.

Muncie Power was built from the ground up, starting with just two employees distributing auto parts in 1935. Over the next 50 years, we became one of the largest distributors of PTOs and hydraulic components in the United States.

In 1986, we began manufacturing our own line of PTOs and quickly became one of the top providers of mobile power equipment in the vocational truck market.

Later, in 1999, Muncie Power joined the Interpump Group, a multinational organization that is the world's largest manufacturer of high-pressure piston pumps and an international leader in the hydraulic sector. This partnership has allowed Muncie Power to expand its product offerings to better support our customers.

Flash forward to today, Muncie Power continues to expand. We broke ground on a new manufacturing facility (below left) in Tulsa, Oklahoma, in 2020, and acquired a new distribution facility (below right) in Yorktown, Indiana, in 2022, to allow for increased capacity and efficiency.



INNOVATION

By striving to provide the best for our customers, Muncie Power continues to invest in the development of new and innovative products.

Our continued investment in our engineering team has led to new innovations including patented gear rattle abatement for quiet PTOs, the Muncie Start® to eliminate torque spikes, easy to install wire harnesses, easily adjustable PTO flanges, and numerous PTOs designed to fit new transmissions.



QUALITY

The trucks our products power are important to the communities we live in and we understand how vital it is that our products work when you need them to. We invest in our people to ensure all of our products are manufactured and assembled with the utmost care and at the highest quality. We have instilled a rigorous quality inspection program, an extensive warranty program, and a process that allow focused attention to detail to create a long-lasting product.



SERVICE

While Muncie Power is a manufacturer, we still view ourselves as a customer service organization first. We continuously invest in building industry-leading customer focused teams including customer service, sales, field technicians, warranty, and training as well as many other team members who work directly with our customers. We aspire to build trust by truly engaging with our customers to understand what they need, and how we can best support them.



POWER TAKE-OFFS

AISIN TRANSMISSIONS

MECHANICAL SHIFT

TG6S-I84



- Versatile 6-bolt mechanical shift PTO
- Requires adapter to clear internal interference
- Lightweight, reduced noise, and superior heat dissipation

MAX TORQUE

INTERMITTENT: 205 lbs.ft. (277 Nm)*

MAX HP (@ 1,000 RPM)

INTERMITTENT: 39 HP (29 kW)*

APPROX. WEIGHT

22 lbs. (10.0 Kg.)

Gear adapters available to create space, change the PTO output shaft's rotation, or relocate the output shaft.

CLUTCH SHIFT

FA6B-I84



- 6-bolt clutch shift PTO
- Angular housing moves the clutch-shifted output below chassis obstructions for either driveshaft applications or direct mount pumps
- Advanced gear design provides reduced noise

MAX TORQUE

INTERMITTENT: 124 lbs.ft. (168 Nm)*

MAX HP (@ 1,000 RPM)

INTERMITTENT: 24 HP (18 kW)*

APPROX. WEIGHT

34 lbs. (15.4 Kg.)

CS6B-I84



- 6-bolt clutch shift PTO with patented drag break
- Direct-mount flanges with ability to rotate allow the pump to be positioned for maximum clearance

MAX TORQUE

INTERMITTENT: 250 lbs.ft. (339 Nm)*

MAX HP (@ 1,000 RPM)

INTERMITTENT: 48 HP (36 kW)*

APPROX. WEIGHT

47 lbs. (21.3 Kg.)

Gear adapters available to create space, change the PTO output shaft's rotation, or relocate the output shaft.

** PTOs are derated to match transmission ratings.*

ALLISON TRANSMISSIONS

1000 & 2000 SERIES

MECHANICAL SHIFT

TG6B-A69

- Versatile 6-bolt mechanical shift PTO
- Lightweight, reduced noise, and superior heat dissipation

MAX TORQUE INTERMITTENT:	250 lbs.ft. (339 Nm)*
MAX HP (@ 1,000 RPM) INTERMITTENT:	48 HP (36 kW)*
APPROX. WEIGHT	22 lbs. (10.0 Kg.)

Gear adapters available to create space, change the PTO output shaft's rotation, or relocate the output shaft.



CLUTCH SHIFT

FA6B-A67

- 6-bolt clutch shift PTO
- Angular housing moves the clutch-shifted output below chassis obstructions for either driveshaft applications or direct mount pumps
- Advanced gear design provides reduced noise

MAX TORQUE INTERMITTENT:	100 lbs.ft. (136 Nm)*
MAX HP (@ 1,000 RPM) INTERMITTENT:	19 HP (14 kW)*
APPROX. WEIGHT	34 lbs. (15.4 Kg.)



CS6B-A67

- 6-bolt clutch shift PTO with patented drag break
- Direct-mount flanges with ability to rotate allow the pump to be positioned for maximum clearance
- Gear box available for PTO speed reduction CSGB 200-125

MAX TORQUE INTERMITTENT:	300 lbs.ft. (407 Nm)*
MAX HP (@ 1,000 RPM) INTERMITTENT:	57 HP (43 kW)*
APPROX. WEIGHT	47 lbs. (21.3 Kg.)

Gear adapters available to create space, change the PTO output shaft's rotation, or relocate the output shaft.



* PTOs are derated to match transmission ratings.

ALLISON TRANSMISSIONS

3000 & 4000 SERIES

CLUTCH SHIFT

A20-A10



- Medium-duty 10-bolt clutch shift PTO
- New rotatable pump flange allows for 30 unique positions
- Increased clearance for easier installation
- Shift cover allowing 360-degree rotation
- Tapered roller bearings increasing PTO life

MAX TORQUE
INTER./CONTINUOUS: 415 lbs.ft. (563 Nm)

MAX HP (@ 1,000 RPM)
INTER/CONTINUOUS: 79 HP (59 kW)

APPROX. WEIGHT 47.2 lbs. (21.4 Kg.)

Muncie Start®: Shift Code SX (12 V Integral) or Shift Code SR (12 V Remote Mount)

(See page 47 for additional Muncie Start information.)

CS40-A10 OR CS41-A10



- Heavy-duty 10-bolt clutch shift PTO
- Precision-ground gears allow for high-torque capacity with quiet operation
- Use CS40-A10 for 3700 Series

MAX TORQUE
INTERMITTENT: 484 lbs.ft. (656 Nm)*

MAX HP (@ 1,000 RPM)
INTERMITTENT: 92 HP (68 kW)*

APPROX. WEIGHT 69 lbs. (31.3 Kg.)

Muncie Start®: Special Feature option 6 (Stationary or Mobile)

(See page 47 for additional Muncie Start information.)

CS10-A10 OR CS11-A10



- Heavy-duty 10-bolt clutch shift PTO
- Versatility for both remote and direct mount pumps with rotatable direct mount flanges

MAX TORQUE
INTERMITTENT: 500 lbs.ft. (678 Nm)

MAX HP (@ 1,000 RPM)
INTERMITTENT: 95 HP (71 kW)

APPROX. WEIGHT 68 lbs. (30.9 Kg.)

*** PTOs are derated to match transmission ratings.**

CONSTANT DRIVE

A30-A10

- Medium-duty, 10-bolt constant drive/continuous duty PTO
- New rotatable pump flange allows for 30 unique positions
- Single continuous/intermittent torque rating

MAX TORQUE	
INTER./CONTINUOUS:	415 lbs.ft. (563 Nm)
MAX HP (@ 1,000 RPM)	
INTER/CONTINUOUS:	79 HP (59 kW)
APPROX. WEIGHT	38 lbs. (17.2 Kg.)



* PTOs are derated to match transmission ratings.

EX DRIVES

- Designed for the Allison 3000 and 4000 Series transmissions with a cooler or retarder allowing for larger gear or piston pumps to be direct mounted
- The EX Drive can be paired with the A20 Series, A30 Series, CS10/11 Series, and CS40/41 Series PTOs
- Shaft extension models are available for both clutch shift and constant drive Muncie Power PTOs and are equipped with wet-spline couplings

MAX TORQUE	
WITH A20:	
INTER./CONTINUOUS:	415 lbs.ft. (563 Nm)
WITH A30:	
INTER./CONTINUOUS:	415 lbs.ft. (563 Nm)
WITH CS10/11:	
INTER./CONTINUOUS:	500 lbs.ft. (678 Nm)
WITH CS40/41:	
INTER./CONTINUOUS:	484 lbs.ft. (656 Nm)
MAX HP (@ 1,000 RPM)	
WITH A20:	77 HP (57 kW)
WITH A30:	77 HP (57 kW)
WITH CS10/11:	95 HP (71 kW)
WITH CS40/41:	92 HP (70 kW)
APPROX. WEIGHT	42 lbs. (19.05 Kg.)

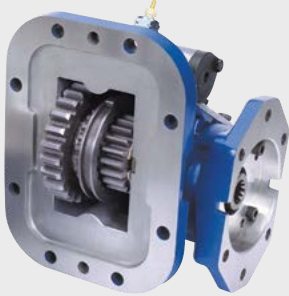


ALLISON TRANSMISSIONS

5000, 6000, 8000, & 9000 SERIES

MECHANICAL SHIFT

TG8S-U62



- Versatile 8-bolt mechanical shift PTO
- Lightweight, reduced noise, and superior heat dissipation

MAX TORQUE
INTERMITTENT: 285 lbs.ft. (386 Nm)

MAX HP (@ 1,000 RPM)
INTERMITTENT: 54 HP (40 kW)

APPROX. WEIGHT 22 lbs. (10.0 Kg.)

828S-U62



- Heavy-duty 8-bolt mechanical shift PTO
- Cast iron housing, lever or air shift, and optional single- or dual-pump mounts
- Designed for use with high-torque mechanical equipment

MAX TORQUE
INTERMITTENT: 500 lbs.ft. (678 Nm)

MAX HP (@ 1,000 RPM)
INTERMITTENT: 95 HP (71 kW)

APPROX. WEIGHT 85 lbs. (38.6 Kg.)

AT, MT, & HT SERIES

MECHANICAL SHIFT

TG6S-U60



- Versatile 6-bolt mechanical shift PTO
- Lightweight, reduced noise, and superior heat dissipation

MAX TORQUE
INTERMITTENT: 285 lbs.ft. (386 Nm)

MAX HP (@ 1,000 RPM)
INTERMITTENT: 54 HP (40 kW)

APPROX. WEIGHT 22 lbs. (10.0 Kg.)

Gear adapters available to create space, change the PTO output shaft's rotation, or relocate the output shaft.

MECHANICAL SHIFT

SH6S-U60

- 6-bolt integral air shift PTO
- High torque capacity to meet demanding applications
- Fits most popular pump types

MAX TORQUE INTERMITTENT:	400 lbs.ft. (542 Nm)
MAX HP (@ 1,000 RPM) INTERMITTENT:	76 HP (57 kW)
APPROX. WEIGHT	35 lbs. (15.9 Kg.)

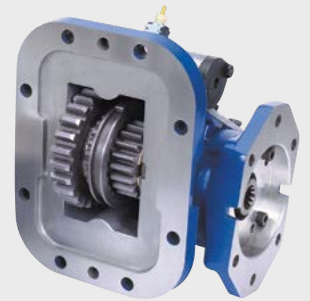
Gear adapters available to create space, change the PTO output shaft's rotation, or relocate the output shaft.



TG8S-U62 (HT only)

- Versatile 8-bolt mechanical shift PTO
- Lightweight, reduced noise, and superior heat dissipation

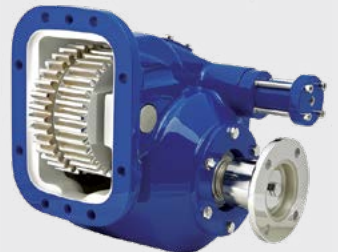
MAX TORQUE INTERMITTENT:	285 lbs.ft. (386 Nm)
MAX HP (@ 1,000 RPM) INTERMITTENT:	54 HP (40 kW)
APPROX. WEIGHT	22 lbs. (10.0 Kg.)



828S-U62 (HT only)

- Heavy-duty 8-bolt mechanical shift PTO
- Cast iron housing, lever or air shift, and optional, single- or dual-pump mounts
- Designed for use with high-torque mechanical equipment

MAX TORQUE INTERMITTENT:	500 lbs.ft. (678 Nm)
MAX HP (@ 1,000 RPM) INTERMITTENT:	95 HP (71 kW)
APPROX. WEIGHT	85 lbs. (38.6 Kg.)



CLUTCH SHIFT

CS6S-U60

- 6-bolt clutch shift PTO with patented drag break
- Direct-mount flanges with ability to rotate allow the pump to be positioned for maximum clearance

MAX TORQUE INTERMITTENT:	350 lbs.ft. (475 Nm)
MAX HP (@ 1,000 RPM) INTERMITTENT:	67 HP (50 kW)
APPROX. WEIGHT	47 lbs. (21.3 Kg.)

Gear adapters available to create space, change the PTO output shaft's rotation, or relocate the output shaft.



DETROIT DIESEL

TRANSMISSIONS

DT12

MECHANICAL SHIFT—REAR MOUNT

RS6S-P89



- Designed to fit the Detroit DT12 transmission in Freightliner, or Western Star Class 8 Cascadia trucks
- M1, M2, and M3 ratios

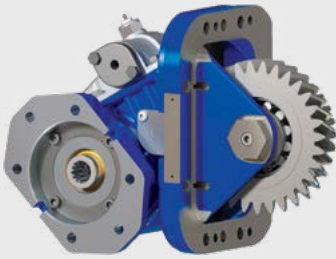
MAX TORQUE INTERMITTENT:	317 lbs.ft. (430 Nm)
------------------------------------	----------------------

MAX HP (@ 1,000 RPM) INTERMITTENT:	60 HP (45 kW)
----------------------------------------------	---------------

APPROX. WEIGHT	23 lbs. (10.4 Kg.)
-----------------------	--------------------

MECHANICAL SHIFT

TG8S-U68



- Versatile 8-bolt mechanical shift PTO
- Lightweight, bottom-mount PTO
- Requires adapter gear for use with DT12 transmissions

MAX TORQUE INTERMITTENT:	285 lbs.ft. (386 Nm)
------------------------------------	----------------------

MAX HP (@ 1,000 RPM) INTERMITTENT:	54 HP (40 kW)
----------------------------------------------	---------------

APPROX. WEIGHT	22 lbs. (10.0 Kg.)
-----------------------	--------------------

828S-U68



- Heavy-duty 8-bolt mechanical shift PTO
- High torque bottom-mount PTO
- Requires adapter gear for use with DT12 transmissions

MAX TORQUE INTERMITTENT:	500 lbs.ft. (678 Nm)
------------------------------------	----------------------

MAX HP (@ 1,000 RPM) INTERMITTENT:	95 HP (71 kW)
----------------------------------------------	---------------

APPROX. WEIGHT	85 lbs. (38.6 Kg.)
-----------------------	--------------------

Note: Adapter gear part numbers

40TA6479	DT12-OHE, DT12-OV
----------	-------------------

40TA6480	DT12-OVX
----------	----------

EATON/FULLER TRANSMISSIONS

ENDURANT HD (E80)/ENDURANT XD (E70)

MECHANICAL SHIFT

TG8F-E70 (XD) OR TG8F-E80 (HD)

- Versatile 8-bolt mechanical shift PTO
- Lightweight, reduced noise, and superior heat dissipation

MAX TORQUE	
INTERMITTENT:	285 lbs.ft. (386 Nm)
MAX HP (@ 1,000 RPM)	
INTERMITTENT:	54 HP (40 kW)
APPROX. WEIGHT	22 lbs. (10.0 Kg.)

SH8F-E80

- 8-bolt integral air shift PTO
- High torque capacity to meet demanding applications
- Fits most popular pump types
- Endurant 12-speed only

MAX TORQUE	
INTERMITTENT:	366 lbs.ft. (542 Nm)*
MAX HP (@ 1,000 RPM)	
INTERMITTENT:	70 HP (57 kW)*
APPROX. WEIGHT	35 lbs. (15.9 Kg.)

828F-E70 OR 828F-E80

- Heavy-duty 8-bolt mechanical shift PTO
- Cast-iron housing, lever or air shift, and optional single- or dual-pump mounts
- Designed for use with high-torque mechanical equipment

MAX TORQUE	
INTERMITTENT:	500 lbs.ft. (678 Nm)
MAX HP (@ 1,000 RPM)	
INTERMITTENT:	95 HP (71 kW)
APPROX. WEIGHT	85 lbs. (38.6 Kg.)

RS4S-P81 OR RS4S-P84

- Mechanically shifted thru-shaft PTO
- Required adapter and stud kits must be ordered separately
- Adapter: 601K7150000

MAX TORQUE	
RS4S-P81:	442 lbs.ft. (599 Nm)
RS4S-P84:	369 lbs.ft. (500 Nm)
MAX HP (@ 1,000 RPM)	
RS4S-P81:	84 HP (62 kW)
RS4S-P84:	70 HP (52 kW)
APPROX. WEIGHT	22 lbs. (9.97 Kg.)

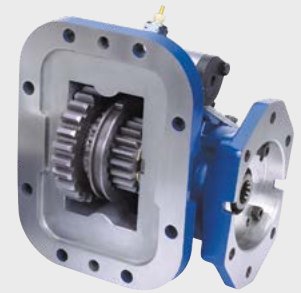
SH6B-U68 OR SH6S-U68

- 6-bolt integral air shift PTO
- High torque capacity to meet demanding applications
- Fits most popular pump types
- U68 gear code may also be used

MAX TORQUE	
INTERMITTENT:	400 lbs.ft. (542 Nm)
MAX HP (@ 1,000 RPM)	
INTERMITTENT:	76 HP (57 kW)
APPROX. WEIGHT	35 lbs. (15.9 Kg.)

Gear adapters available to create space, change the PTO output shaft's rotation, or relocate the output shaft.

* PTOs are derated to match transmission ratings.



EATON/FULLER TRANSMISSIONS

ROADRANGER/ULTRASHIFT

MECHANICAL SHIFT

8405A (Use 8405B for metric stud kit)



- 8-bolt PTO for Eaton transmissions
- Robust design provides a rigid structure for high vibration environments

MAX TORQUE INTERMITTENT:	230 lbs.ft. (312 Nm)
MAX HP (@ 1,000 RPM) INTERMITTENT:	44 HP (33 kW)
APPROX. WEIGHT	35 lbs. (15.9 Kg.)



TG8B-U68 OR TG8S-U68

- Versatile 8-bolt mechanical shift PTO
- Lightweight, reduced noise, and superior heat dissipation

MAX TORQUE INTERMITTENT:	285 lbs.ft. (386 Nm)
MAX HP (@ 1,000 RPM) INTERMITTENT:	54 HP (40 kW)
APPROX. WEIGHT	22 lbs. (10.0 Kg.)



SH8B-U68 OR SH8S-U68

- 8-bolt integral air shift PTO
- High torque capacity to meet demanding applications
- Fits most popular pump types
- U68 gear code may also be used

MAX TORQUE INTERMITTENT:	400 lbs.ft. (542 Nm)
MAX HP (@ 1,000 RPM) INTERMITTENT:	76 HP (57 kW)
APPROX. WEIGHT	35 lbs. (15.9 Kg.)



828B-U68 OR 828S-U68

- Heavy-duty 8-bolt mechanical shift PTO
- Cast iron housing, lever or air shift, and optional single- or dual-pump mounts
- Designed for use with high-torque mechanical equipment

MAX TORQUE INTERMITTENT:	500 lbs.ft. (678 Nm)
MAX HP (@ 1,000 RPM) INTERMITTENT:	95 HP (71 kW)
APPROX. WEIGHT	85 lbs. (38.6 Kg.)

Note: U68 input gear can be replaced by S68 to obtain output speed 92% engine speed. Spacer and stud kit required.

ROADRANGER/ULTRASHIFT

MECHANICAL SHIFT - REVERSIBLE

RL6D-U68

- Reversible 6-bolt PTO
- Use to reverse rotation of the standard PTO output to match driven equipment
- Lever shift is standard, but optional air-shift provisions are available

MAX TORQUE INTERMITTENT:	200 lbs.ft. (190 Nm)
MAX HP (@ 1,000 RPM) INTERMITTENT:	38 HP (19 kW)
APPROX. WEIGHT	22 lbs. (10 Kg.)



RL8B-U68 OR RL8S-U68

- Reversible 8-bolt PTO
- Use to reverse rotation of the standard PTO output to match driven equipment
- Lever shift is standard, but optional air-shift provisions are available

MAX TORQUE INTERMITTENT:	200 lbs.ft. (190 Nm)
MAX HP (@ 1,000 RPM) INTERMITTENT:	38 HP (19 kW)
APPROX. WEIGHT	22 lbs. (10 Kg.)



CLUTCH SHIFT

CS6B-U68 OR CS6S-U68

- 6-bolt clutch shift PTO with patented drag break
- Direct-mount flanges with the ability to rotate allow the pump to be positioned for maximum clearance

MAX TORQUE INTERMITTENT:	300 lbs.ft. (407 Nm)*
MAX HP (@ 1,000 RPM) INTERMITTENT:	57 HP (43 kW)*
APPROX. WEIGHT	47 lbs. (21.3 Kg.)



Gear adapters available to create space, change the PTO output shaft's rotation, or relocate the output shaft.

CS8B-U68 OR CS8S-U68

- 8-bolt clutch shift PTO with patented drag break
- Direct-mount flanges with the ability to rotate allow the pump to be positioned for maximum clearance

MAX TORQUE INTERMITTENT:	300 lbs.ft. (407 Nm)*
MAX HP (@ 1,000 RPM) INTERMITTENT:	57 HP (43 kW)*
APPROX. WEIGHT	47 lbs. (21.3 Kg.)



* PTOs are derated to match transmission ratings.

FORD TRANSMISSIONS

TORQSHIFT® 6R140 6-SPEED

CLUTCH SHIFT

FR6Q-F12

Rating shown is for stationary applications only.



- 6-bolt clutch shift PTO
- Fits Ford Super Duty trucks with Ford 6R140 transmissions, primarily F-350–F-550 (may also be used on F-650–F-750)
- Patented noise abatement mechanism eliminates virtually all gear rattle noise

MAX TORQUE

INTERMITTENT: 200 lbs.ft. (271 Nm)

MAX HP (@ 1,000 RPM)

INTERMITTENT: 39 HP (29 kW)

APPROX. WEIGHT

35 lbs. (15.9 Kg.)

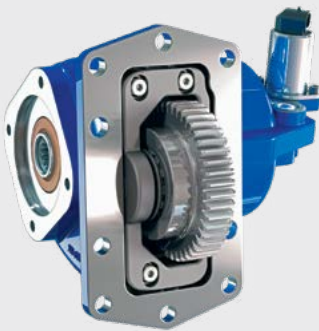
Muncie Start®: Special Feature option 6 (Stationary or Mobile) or Special Feature option 7 (Stationary and Mobile, only available on 6, F, and D shift types)

(See page 47 for additional Muncie Start information.)

10R140 10-SPEED FOR F-250–F-600 SUPER DUTY GAS & DIESEL TRUCKS

CLUTCH SHIFT

F20-F13



- 10-bolt clutch shift PTO
- Designed for the Ford Super Duty trucks F-250–F-600, with the Ford 10R140 transmissions
- Features patented noise abatement technology
- Plug and play wire harness

MAX TORQUE

INTERMITTENT: 261 lbs.ft. (354 Nm)

MAX HP (@ 1,000 RPM)

INTERMITTENT: 50 HP (37 kW)

APPROX. WEIGHT

29 lbs. (13.15 Kg.)

Muncie Start®: Shift Code GS (Gas Engine) or Shift Code DS (Diesel Engine)

(See page 47 for additional Muncie Start information.)

10R140 10-SPEED FOR F-650 & F-750 SUPER DUTY DIESEL TRUCKS

CLUTCH SHIFT F22-F13

- 8-bolt mounting pattern unique to the 10R140 10-speed F-650 & F-750 super duty diesel trucks
- Standard pump flange allowing the use of five different Muncie Power series of hydraulic pumps directly to the PTO
- Features patented noise abatement technology
- New plug and play wire harness and module simplifying the installation process

MAX TORQUE
INTERMITTENT: 261 lbs.ft. (354 Nm)

MAX HP (@ 1,000 RPM)
INTERMITTENT: 50 HP (37 kW)

APPROX. WEIGHT 29 lbs. (13.15 Kg.)

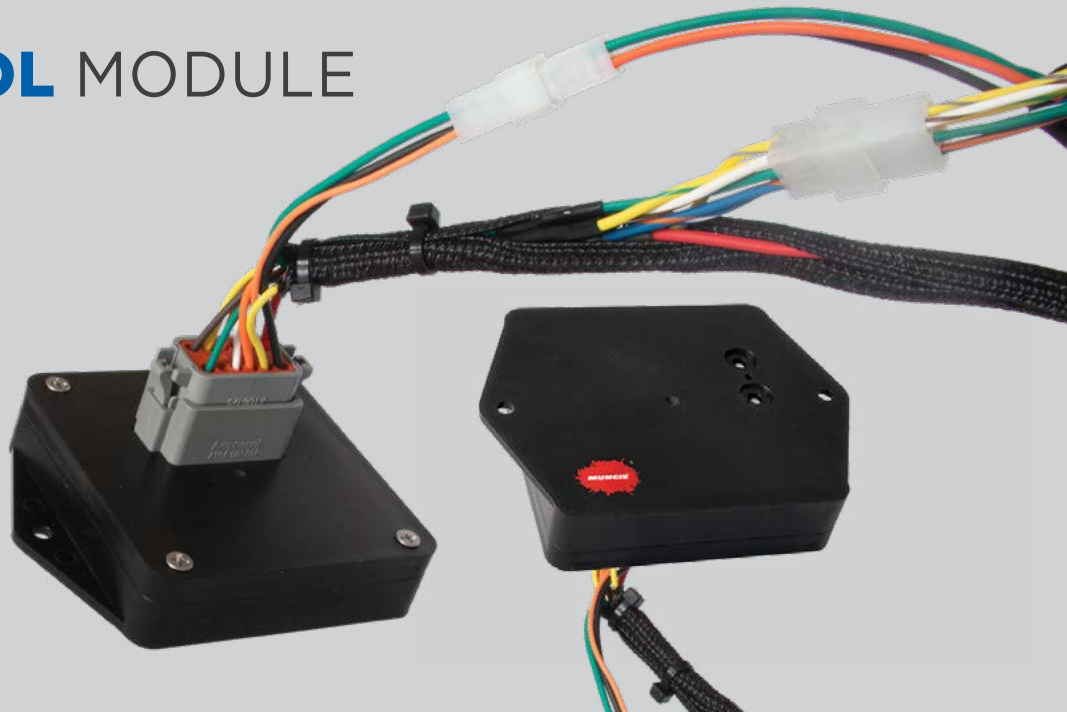


Muncie Start®: Shift Code DS, 12 V (Electric/Hydraulic Diesel) or Shift Code RS, 12 V (Limited Harness)

(See page 47 for additional Muncie Start information.)

RPM CONTROL MODULE

- New plug & play wire harness module soon to become standard, simplifies the installation process
- Replaces the traditional analog components and harnesses
- LED light sequences provides information to diagnose and notify specific problems allowing for easier troubleshooting



MACK TRANSMISSIONS

MAXITORQUE ES

MECHANICAL SHIFT

TG6S-M65



- Versatile 6-bolt mechanical shift PTO
- Lightweight, reduced noise, and superior heat dissipation

MAX TORQUE
INTERMITTENT: 285 lbs.ft. (386 Nm)

MAX HP (@ 1,000 RPM)
INTERMITTENT: 54 HP (40 kW)

APPROX. WEIGHT 22 lbs. (10.0 Kg.)

Gear adapters available to create space, change the PTO output shaft's rotation, or relocate the output shaft.

SH6S-M65



- 6-bolt integral air shift PTO
- High torque capacity to meet demanding applications
- Fits most popular pump types

MAX TORQUE
INTERMITTENT: 400 lbs.ft. (542 Nm)

MAX HP (@ 1,000 RPM)
INTERMITTENT: 76 HP (57 kW)

APPROX. WEIGHT 35 lbs. (15.9 Kg.)

Gear adapters available to create space, change the PTO output shaft's rotation, or relocate the output shaft.

8405A (Use 8405B for metric stud kit)



- 8-bolt PTO for Mack transmissions
- Robust design provides a rigid structure for high vibration environments

MAX TORQUE
INTERMITTENT: 230 lbs.ft. (312 Nm)

MAX HP (@ 1,000 RPM)
INTERMITTENT: 44 HP (33 kW)

APPROX. WEIGHT 35 lbs. (15.9 Kg.)

MECHANICAL SHIFT

TG8S-M65

- Versatile 8-bolt mechanical shift PTO
- Lightweight, reduced noise, and superior heat dissipation

MAX TORQUE INTERMITTENT:	285 lbs.ft. (386 Nm)
MAX HP (@ 1,000 RPM) INTERMITTENT:	54 HP (40 kW)
APPROX. WEIGHT	22 lbs. (10.0 Kg.)



SH8S-M65

- 8-bolt integral air shift PTO
- High torque capacity to meet demanding applications
- Fits most popular pump types

MAX TORQUE INTERMITTENT:	400 lbs.ft. (542 Nm)
MAX HP (@ 1,000 RPM) INTERMITTENT:	76 HP (57 kW)
APPROX. WEIGHT	35 lbs. (15.9 Kg.)



828S-M65

- Heavy-duty 8-bolt mechanical shift PTO
- Cast iron housing, lever or air shift, and optional single- or dual-pump mounts
- Designed for use with high-torque mechanical equipment

MAX TORQUE INTERMITTENT:	450 lbs.ft. (610 Nm)*
MAX HP (@ 1,000 RPM) INTERMITTENT:	85 HP (63 kW)*
APPROX. WEIGHT	85 lbs. (38.6 Kg.)



* PTOs are derated to match transmission ratings.

MACK TRANSMISSIONS

MAXITORQUE ES *(continued)*

MECHANICAL SHIFT - REVERSIBLE

RL6D-M65



- Reversible 6-bolt PTO
- Use to reverse rotation of the standard PTO output to match driven equipment
- Lever shift is standard, but optional air-shift provisions are available

MAX TORQUE
INTERMITTENT: 200 lbs.ft. (190 Nm)

MAX HP (@ 1,000 RPM)
INTERMITTENT: 38 HP (19 kW)

APPROX. WEIGHT 22 lbs. (10 Kg.)

RL8S-M65



- Reversible 8-bolt PTO
- Use to reverse rotation of the standard PTO output to match driven equipment
- Lever shift is standard, but optional air-shift provisions are available

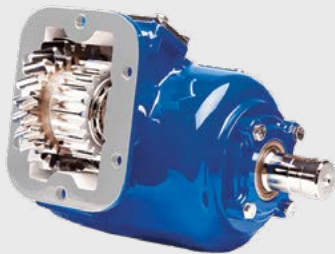
MAX TORQUE
INTERMITTENT: 200 lbs.ft. (190 Nm)

MAX HP (@ 1,000 RPM)
INTERMITTENT: 38 HP (19 kW)

APPROX. WEIGHT 22 lbs. (10 Kg.)

CLUTCH SHIFT

CS6S-M65



- 6-bolt clutch shift PTO with patented drag break
- Direct-mount flanges with ability to rotate allow the pump to be positioned for maximum clearance

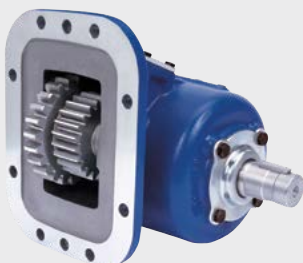
MAX TORQUE
INTERMITTENT: 300 lbs.ft. (407 Nm)

MAX HP (@ 1,000 RPM)
INTERMITTENT: 57 HP (43 kW)

APPROX. WEIGHT 47 lbs. (21.3 Kg.)

Gear adapters available to create space, change the PTO output shaft's rotation, or relocate the output shaft.

CS8S-M65



- 8-bolt clutch shift PTO with patented drag break
- Direct-mount flanges with ability to rotate allow the pump to be positioned for maximum clearance

MAX TORQUE
INTERMITTENT: 300 lbs.ft. (407 Nm)

MAX HP (@ 1,000 RPM)
INTERMITTENT: 57 HP (43 kW)

APPROX. WEIGHT 47 lbs. (21.3 Kg.)

mDRIVE

MECHANICAL SHIFT - REAR MOUNT

RS4S-P86

- Mechanically shifted two-gear PTO
- Provides clearance for direct mount pumps
- Available in multiple output ratios
- Perfect for end dump and other direct mount pump applications

MAX TORQUE	369 lbs.ft. (500 Nm)
MAX HP (@ 1,000 RPM)	70 HP (52 kW)
APPROX. WEIGHT	15 lbs. (6.8 Kg.)
MODEL CONFIGURATIONS	RS4S-P86V*-P1CX for 1310 Companion Flange Output RS4S-P86V*-P1IX for DIN 5462-Spline Pump Mount RS4S-P86V*-P1KX for SAE "B" 7/8"-13T Spline Pump Mount



RS4S-P93

- Mechanically shifted dual output PTO
- Outputs can be shifted independently
- Perfect for any application requiring multiple PTOs

MAX TORQUE	368 lbs.ft. (499 Nm)
MAX HP (@ 1,000 RPM)	70 HP (52 kW)
APPROX. WEIGHT	22 lbs. (10 Kg.)
MODEL CONFIGURATIONS	RS4S-P93VN-P1CX for 1310 Companion Flange RS4S-P93VN-P1IX for DIN 5462-Spline Pump Mount RS4S-P93VN-P1KX for SAE "B" 7/8"-13 Spline Pump Mount



RS4S-P81

- Mechanically shifted thru-shaft PTO
- Driveline applications only
- Perfect for blower and vacuum pump applications

MAX TORQUE	442 lbs.ft. (599 Nm)
MAX HP (@ 1,000 RPM)	84 HP (62 kW)
APPROX. WEIGHT	22 lbs. (10 Kg.)
MODEL CONFIGURATIONS	RS4S-P81V8-P1CX for 1310 Companion Flange Output



PACCAR TRANSMISSIONS

PACCAR TX8

MECHANICAL SHIFT

P58-Z11



- Pneumatically shifted clutch pack
- Internally pressure lubricated bearings
- Compatible with most common gear pumps
- 121% of engine speed

MAX TORQUE

INTER/CONTINUOUS: 420 lbs.ft. (569 Nm)

MAX HP (@ 1,000 RPM)

INTER/CONTINUOUS: 80 HP (60 kW)

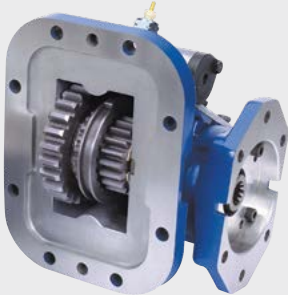
APPROX. WEIGHT

47 lbs. (21 Kg.)

PACCAR TX12 (E80)/PACCAR TX18 (E70)

MECHANICAL SHIFT

TG8F-E70 AND TG8F-E80



- Versatile 8-bolt mechanical shift PTO
- Lightweight, reduced noise, and superior heat dissipation

MAX TORQUE

INTERMITTENT: 285 lbs.ft. (386 Nm)

MAX HP (@ 1,000 RPM)

INTERMITTENT: 54 HP (40 kW)

APPROX. WEIGHT

22 lbs. (10.0 Kg.)

PACCAR TX12/PACCAR TX18

SH8F-E80

- 8-bolt mechanical shift PTO
- High torque capacity to meet demanding applications
- Fits most popular pump types
- PACCAR TX12 only

MAX TORQUE INTERMITTENT:	366 lbs.ft. (542 Nm)
MAX HP (@ 1,000 RPM) INTERMITTENT:	70 HP (57 kW)
APPROX. WEIGHT	35 lbs. (15.9 Kg.)



828F-E70 AND 828F-E80

- Heavy-duty 8-bolt mechanical shift PTO
- Cast-iron housing, lever or air shift, and optional single mounts pump
- Designed for use with high-torque mechanical equipment

MAX TORQUE INTERMITTENT:	500 lbs.ft. (678 Nm)
MAX HP (@ 1,000 RPM) INTERMITTENT:	95 HP (71 kW)
APPROX. WEIGHT	85 lbs. (38.6 Kg.)



RS4S-P81 OR RS4S-P84

- Mechanically shifted thru-shaft PTO
- Required adapter and stud kits must be ordered separately
- Adapter: 601K7150000

MAX TORQUE RS4S-P81: RS4S-P84:	442 lbs.ft. (599 Nm) 369 lbs.ft. (500 Nm)
MAX HP (@ 1,000 RPM) RS4S-P81: RS4S-P84:	84 HP (62 kW) 70 HP (52 kW)
APPROX. WEIGHT	22 lbs. (9.97 Kg.)



VOLVO TRANSMISSIONS

I-SHIFT

MECHANICAL SHIFT - REAR MOUNT

RS4S-P86



- Mechanically shifted two-gear PTO
- Provides clearance for direct mount pumps
- Available in multiple output ratios
- Perfect for end dump and other direct mount pump applications

MAX TORQUE 369 lbs.ft. (500 Nm)

MAX HP (@ 1,000 RPM) 70 HP (52 kW)

APPROX. WEIGHT 15 lbs. (6.8 Kg.)

MODEL CONFIGURATIONS

RS4S-P86V*-P1CX for 1310 Companion Flange Output

RS4S-P86V*-P1IX for DIN 5462-Spline Pump Mount

RS4S-P86V*-P1KX for SAE "B" 7/8"-13T Spline Pump Mount

RS4S-P93



- Mechanically shifted dual output PTO
- Outputs can be shifted independently
- Perfect for any application requiring multiple PTOs

MAX TORQUE 368 lbs.ft. (499 Nm)

MAX HP (@ 1,000 RPM) 70 HP (52 kW)

APPROX. WEIGHT 22 lbs. (10 Kg.)

MODEL CONFIGURATIONS

RS4S-P93VN-P1CX for 1310 Companion Flange

RS4S-P93VN-P1IX for DIN 5462-Spline Pump Mount

RS4S-P93VN-P1KX for SAE "B" 7/8"-13 Spline Pump Mount

RS4S-P81



- Mechanically shifted thru-shaft PTO
- Driveline applications only
- Perfect for blower and vacuum pump applications

MAX TORQUE 442 lbs.ft. (599 Nm)

MAX HP (@ 1,000 RPM) 84 HP (62 kW)

APPROX. WEIGHT 22 lbs. (10 Kg.)

MODEL CONFIGURATIONS

RS4S-P81V8-P1CX for 1310 Companion Flange Output

SPLIT SHAFT PTOS

SS66 SERIES

- Provides two 6-bolt PTO apertures where none exist on the main transmission or where space limitations restrict access to accept various, common PTO series
- Engagement can be via air shift or heavy-duty, push-pull cable

MAX TORQUE	
THROUGHPUT:	2,900 lbs.ft. (4,000 Nm)
PTO DRIVE GEAR:	289 lbs.ft. (392 Nm)

MAX HP (@ 1,000 RPM)	
PTO DRIVE GEAR:	55 HP (41 kW)

APPROX. WEIGHT	
WITHOUT PTO:	20 lbs. (9.1 Kg.)



SS88 SERIES

- Allows for mounting of two 8-bolt type PTOs behind the transmission on medium- and heavy-duty vehicles
- High-quality 6-pitch spur gear to handle the torque ratings of large 8-bolt PTOs

MAX TORQUE	
THROUGHPUT:	14,400 lbs.ft. (20,000 Nm)
PTO DRIVE GEAR:	21,600 lbs.ft. (30,000 Nm) 1,200 lbs.ft. (1,624 Nm)

MAX HP (@ 1,000 RPM)	
PTO DRIVE GEAR:	228 HP (170 kW)

APPROX. WEIGHT	
WITHOUT PTO:	160 lbs. (72.6 Kg.)



SSH2 & SSV2/4 SERIES

- Used when auxiliary power requirements exceed the capacity of transmission-mounted PTOs
- Upright and horizontal versions provide access to output drives as needed

MAX TORQUE	
THROUGHPUT:	14,400 lbs.ft. (20,000 Nm) 21,600 lbs.ft. (30,000 Nm)
SSH2 Series: OUTPUT	940 lbs.ft. (1,274 Nm)
SSV2/4 Series: OUTPUT	796/433 lbs.ft. (1,079 / 587 Nm)

MAX HP (@ 1,000 RPM)	
SSH2 Series: OUTPUT	178 HP (133 kW)
SSV2/4 Series: OUTPUT	152/82 HP (113 / 61 kW)

APPROX. WEIGHT	
SSH2 Series:	234 lbs. (106.1 Kg.)
SSV2/4 Series:	255 lbs. (115.7 Kg.)



SSH2 Series



SSV2/4 Series

GEAR PUMPS

F SERIES



- 11 pump sizes available to fit a wide variety of applications
- Pressure-balanced bushing blocks and sleeve bearings provide long life and high performance

MAX OP. PRESSURE	3,625–2,320 PSI (250–160 BAR)
FLOW RATE (@ 1,000 RPM)*	1.60–8.70 GPM (6.06–33.0 LPM)
DISPLACEMENT	0.37–2.01 cu.in. (6–33 cc.)
APPROX. WEIGHT	7.69–10.01 lbs. (3.4–4.5 Kg.)

H SERIES



- All cast iron bushing pump designed for low to medium flow systems
- Available with integral, priority flow control capabilities; great for use on steering applications

MAX OP. PRESSURE	3,500–2,500 PSI (241–172 BAR)
FLOW RATE (@ 1,000 RPM)*	2.7–10.7 GPM (10–41.0 LPM)
DISPLACEMENT	0.62–2.48 cu.in. (10.2–40.6 cc.)
APPROX. WEIGHT	18–25 lbs. (8.3–11.3 Kg.)

K SERIES



- All cast iron construction with 4 ports and roller bearing design
- Designed to meet the application needs of either a pump or a motor

MAX OP. PRESSURE	3,000–2,500 PSI (207–172 BAR)
FLOW RATE (@ 1,000 RPM)*	4.2–17.1 GPM (15–64 LPM)
DISPLACEMENT	0.98–3.94 cu.in. (16.1–64.6 cc.)
APPROX. WEIGHT	26.5–34.1 lbs. (12.1–15.5 Kg.)

L SERIES



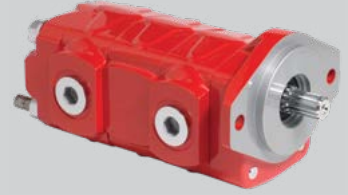
- All cast iron construction with 4 ports and roller bearing design
- Bi-rotational feature helps reduce inventory requirements

MAX OP. PRESSURE	3,000–2,000 PSI (207–138 BAR)
FLOW RATE (@ 1,000 RPM)*	13.8–30.3 GPM (53–114 LPM)
DISPLACEMENT	3.18–7.01 cu.in. (52.1–114.9 cc.)
APPROX. WEIGHT	39.9–51.0 lbs. (18.0–23.2 Kg.)

* Flow rates are theoretical.

TANDEM OPTIONS

The K and L Series gear pumps are available in tandem configurations. Contact Muncie Power for configurations and availability.



PKS1 Series Tandem

Z SERIES

- Pump assemblies custom built for replacement or new installation requirements
- Cast iron construction available in both roller bearing and bushing designs with a wide variety of displacements within each product family
- Industry-standard shafts and port options are available

MAX OP. PRESSURE

Roller Bearing:	3,000–2,000 PSI (207–138 BAR)
Bushing Series:	3,500–2,500 PSI (241–172 BAR)

FLOW RATE (@ 1,000 RPM)*

Roller Bearing:	4.3–53.2 GPM (16.3–201.4 LPM)**
Bushing Series:	2.0–39.0 GPM (7.6–147.6 LPM)**

DISPLACEMENT

Roller Bearing:	0.99–12.30 cu.in. (16.2–201.6 cc.)
Bushing Series:	0.47–9.00 cu.in. (7.7–147.5 cc.)

APPROX. WEIGHT

Roller Bearing - Single:	31–92 lbs. (14.1–47.73 Kg.)
Roller Bearing - Tandem:	25–79 lbs. (13.2–35.8 Kg.)
Bushing Series - Single:	15.5–71 lbs. (7.0–32.2 Kg.)
Bushing Series - Tandem:	15.5–72 lbs. (7.0–32.7 Kg.)



Roller Bearing Design



Bushing Design

* Flow rates are theoretical. ** Flow rate per outlet.

CLUTCH PUMPS

H/K SERIES

- Porting available on both the side and rear for tight-fitting chassis hookups
- Pressure-balanced wear plates provide high system efficiency for lower horsepower needs

MAX OP. PRESSURE

3,500–2,000 PSI (241–138 BAR)

FLOW RATE (@ 1,000 RPM)*

2.7–12.8 GPM (10.2–48.5 LPM)

DISPLACEMENT

0.62–2.96 cu.in. (10.2–48.5 cc.)

APPROX. WEIGHT

34–56 lbs. (15.4–25.4 Kg.)



* Flow rates are theoretical.

OPTIMUM GEAR PUMPS/MOTORS

W SERIES



- Provides 8 displacements to cover lower flow rates, higher pressure requirements
- Bi-rotational, 4-port design is standard with speeds up to 3,600 RPM

MAX OP. PRESSURE	4,350–3,000 PSI (300–210 BAR)
FLOW RATE (@ 1,000 RPM)*	6.3–21 GPM (23.9–79.8 LPM)
DISPLACEMENT	1.45–4.87 cu.in. (23.9–79.8 cc.)
APPROX. WEIGHT	40.8–50.7 lbs. (18.5–23.0 Kg.)

X SERIES



- Provides 9 displacements to cover medium to heavy flow, high-pressure requirements
- Bi-rotational, 4-port design is standard with speeds up to 3,000 RPM

MAX OP. PRESSURE	4,350–2,250 PSI (300–155 BAR)
FLOW RATE (@ 1,000 RPM)*	13.8–36.5 GPM (51.2–138.2 LPM)
DISPLACEMENT	3.18–8.43 cu.in. (52.1–138 cc.)
APPROX. WEIGHT	52.9–67.0 lbs. (24.0–30.4 Kg.)

* Flow rates are theoretical.



X Series Tandem

TANDEM & TRIPLE OPTIONS

The Optimum W and X Series gear pumps and/or motors are available in tandem and triple configurations with extended studs for easy installation. Contact Muncie Power for configurations and availability.

OPTIMUM X LIVE-FLOOR



- Long-life, high-performance bushings
- Quiet design and Muncie Power's OPTI-Grip® technology to resist casting separation
- Designed specifically for use on live floor applications

MAX OP. PRESSURE	3,000 PSI (207 BAR)
FLOW RATE (@ 1,000 RPM)*	27.5 GPM (104.1 LPM)
DISPLACEMENT	6.35 cu.in. (104 cc.)
APPROX. WEIGHT	61.1 lbs. (27.7 Kg.)

* Flow rates are theoretical.

REFUSE PUMPS

MLSM SERIES LIVE PAK

- Provides protection against hydraulic overspeed damage while allowing the driver to maintain full use of the hydraulic system on refuse vehicles
- Built-in flow limiter redirects excess pump flow to the reservoir when pump is on

MAX OP. PRESSURE	3,000–2,500 PSI (207–170 BAR)
FLOW RATE (@ 1,000 RPM)*	26.4–44.4 GPM (99.3–168.1 LPM)
DISPLACEMENT	6.10–10.25 cu.in. (102–166 cc.)
APPROX. WEIGHT	103–113 lbs. (46.7–51.2 Kg.)

Note: Maximum temperature is 200°F (93°C) for the non-adjustable pump safety relief valve.

POWR-PRO & POWER-MISER

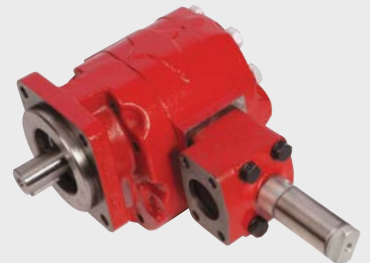
- Dry valve, air-actuated pump systems designed primarily for refuse vehicles
- Lowers operating costs by reducing horsepower draw in OFF mode, saving fuel
- Powr-Pro utilizes a “butterfly” style valve; Power-Miser utilizes an air actuated, plunger-type dry valve

MAX OP. PRESSURE PL and PM Series:	3,000–2,500 PSI (207–172 BAR)
FLOW RATE (@ 1,000 RPM)* PL and PM Series:	13.8-40.1 GPM (52.2-151.8 LPM)
DISPLACEMENT PL Series: PM Series:	3.18–5.73 cu.in. (52–93 cc.) 6.10–9.27 cu.in. (100–152 cc.)
APPROX. WEIGHT PL and PM Series:	49–89 lbs. (22.2–40.4 Kg.)

* Flow rates are theoretical.



Powr-Pro



Power-Miser

DUMP & HOIST PUMPS

E SERIES DUMP



- Standard equipment for tandem- and tri-axle dump trucks and dump trailers with high-volume cylinders
- EH model available for larger ports
- 2- or 3-line system options available

MAX OP. PRESSURE

E and EH Series: 2,500 PSI (173 BAR)

FLOW RATE (@ 1,000 RPM)*

E Series: 22.5–27.6 GPM (85.2–104.5 LPM)

EH Series: 21.4–28.6 GPM (81.0–108.3 LPM)

DISPLACEMENT

E Series: 5.20–6.37 cu.in. (85.2–104.4 cc.)

EH Series: 5.20–6.37 cu.in. (85.2–104.4 cc.)

APPROX. WEIGHT

E Series: 67–69 lbs. (30.4–31.3 Kg.)

EH Series: 68–70 lbs. (30.8–31.7 Kg.)

S SERIES HOIST



- Designed specifically for use on small single- or tandem-axle dump trucks
- 2- or 3-line system options available

MAX OP. PRESSURE

3,000–2,500 PSI (207–172 BAR)**

FLOW RATE (@ 1,000 RPM)*

6.4–17.16 GPM (24.2–65.0 LPM)

DISPLACEMENT

1.47–3.94 cu.in. (24–65 cc.)

APPROX. WEIGHT

32–38 lbs. (14.8–17.2 Kg.)

* Flow rates are theoretical. ** Requires high pressure relief PS1-1231VH for settings above 2,500 PSI.

FIXED DISPLACEMENT PISTON PUMPS

P SERIES



- Offers high speed capabilities up to 2,400 RPM
- Bi-rotational operation with 4 standard sizes
- Direct mounting capabilities using European DIN 5462 shaft

MAX OP. PRESSURE

5,075 PSI (350 BAR)

FLOW RATE (@ 1,000 RPM)*

3.17–8.70 GPM (12.0–32.9 LPM)

DISPLACEMENT

0.73–2.01 cu.in. (12–33 cc.)

APPROX. WEIGHT

23.2 lbs. (10.5 Kg.)

* Flow rates are theoretical. ** Flow rate per outlet.

Q SERIES

- Offers high-operating pressures and speeds up to 1,800 RPM
- Bi-rotational operation with 5 standard sizes
- Direct mounting capability using European DIN 5462 shaft

MAX OP. PRESSURE	Up to 5,075 PSI (350 BAR)
FLOW RATE (@ 1,000 RPM)*	5.01–15.8 GPM (19.0–59.8 LPM)
DISPLACEMENT	1.16–3.66 cu.in. (19–60 cc.)
APPROX. WEIGHT	23.2 lbs. (10.5 Kg.)



R SERIES

- Provides high flow capabilities with speeds up to 1,600 RPM
- Bi-rotational operation with 4 standard sizes for the R Series and 2 standard sizes for the tandem
- Direct mounting capability using European DIN 5462 shaft

MAX OP. PRESSURE	R Series: 4,350 PSI (300 BAR) R Series Tandem: 4,350 PSI (300 BAR)
FLOW RATE (@ 1,000 RPM)*	R Series: 18.5–26.4 GPM (70.0–99.9 LPM) R Series Tandem: 10.8–13.4 GPM (40.9–50.7 LPM)**
DISPLACEMENT	R Series: 4.27–6.10 cu.in. (70–100 cc.) R Series Tandem: 2.50–3.11 cu.in. (41–51 cc.)
APPROX. WEIGHT	R Series: 38.6 lbs. (17.5 Kg.) R Series Tandem: 39.0 lbs. (17.7 Kg.)



T SERIES

- A bent-axis piston pump with speed capabilities of up to 2,300 RPM
- Double shaft seals with 5 standard sizes
- Direct mounting capability using European DIN 5462 shaft

MAX OP. PRESSURE	2,300–6,525 PSI (300–450 BAR)
FLOW RATE (@ 1,000 RPM)*	6.75–28.5 GPM (25.61–107.9 LPM)
DISPLACEMENT	1.56–6.59 cu.in. (25.6–108 cc.)
APPROX. WEIGHT	13.9–29.8 lbs. (6.3–13.5 Kg.)



* Flow rates are theoretical. ** Flow rate per outlet.

T SERIES PT2-025

The T Series PT2-025 is a high-pressure piston pump designed specifically for Ford trucks using the F20 Series and F22 Series PTOs. Its rugged design provides for high performance and extra long life. Standard displacement is 1.56 cu.in. (25.6 cc), with a 6T×21×25 ISO14/UNI 8956 shaft, and a 21-UNI-222 3-bolt mounting flange. Optional fittings are R4BP-20-12 1¼" hose barb to ¾" male BSPP swivel and HC-20-HD heavy duty 1¼" hose clamps.



VARIABLE DISPLACEMENT PISTON PUMPS

PVE SERIES



- Externally adjustable from 1,450–4,495 PSI, preset to 2,610 PSI
- 3 sizes and 2 shaft types available to fit application needs
- Used in closed center hydraulic systems
- Available with either pressure compensation or flow and pressure compensation (load sense)

MAX OP. PRESSURE 3,770–4,495 PSI (350–400 BAR)

FLOW RATE (@ 1,000 RPM)* 26.4–38.8 GPM (99.9–146.9 LPM)

DISPLACEMENT 6.10–8.97 cu.in. (100–147 cc.)

APPROX. WEIGHT 121 lbs. (54.9 Kg.)

PVJ SERIES



- Externally adjustable from 1,450–4,495 PSI, preset to 2,610 PSI
- 3 sizes and 4 shaft types available to fit application needs
- Used in closed center hydraulic systems
- Available with either pressure compensation or flow and pressure compensation (load sense)

MAX OP. PRESSURE 3,770–4,495 PSI (350–400 BAR)

FLOW RATE (@ 1,000 RPM)* 11.9–19.8 GPM (45.1–75.0 LPM)

DISPLACEMENT 2.75–4.58 cu.in. (45–75 cc.)

APPROX. WEIGHT 58.8 lbs. (26.7 Kg.)

PVL SERIES



- Externally adjustable from 1,450–3,045 PSI, preset to 2,610 PSI
- 2 shaft types available
- Used in closed center hydraulic systems
- Available with either pressure compensation or flow and pressure compensation (load sense)

MAX OP. PRESSURE 3,045 PSI (210 BAR)

FLOW RATE (@ 1,000 RPM)* 7.9 GPM (29.9 LPM)

DISPLACEMENT 1.83 cu.in. (30 cc.)

APPROX. WEIGHT 53 lbs. (24 Kg.)

* Flow rates are theoretical.

LOW SPEED HIGH TORQUE MOTORS

MJ200/MJ475 BULK FEED APPLICATIONS

- Roller gerotor design for smooth performance, efficiency, and durability
- Tapered roller bearings for extra side load capacity
- Standard case drain with integral internal drain for extended life
- Disc valve for higher flows and higher pressure
- Available in 7/8" O-Ring ports

MAX OP. PRESSURE	
MJ200	3,045 PSI (21.0 BAR)
MJ475	2,030 PSI (14.0 BAR)
FLOW RATE (@ 1,000 RPM)	
MJ200	19.8 GPM (75 LPM)
MJ475	19.8 GPM (75 LPM)
DISPLACEMENT	
MJ200	12.20 cu.in. (200 cc.)
MJ475	28.99 cu.in. (475 cc.)
APPROX. WEIGHT	
MJ200	25 lbs. (11.34 Kg.)
MJ475	32 lbs. (14.5 Kg.)



MJ100 PRODUCT PUMP APPLICATIONS

- Roller gerotor design for smooth performance, efficiency, and durability
- Tapered roller bearings for extra side load capacity
- Standard case drain with integral internal drain for extended life
- Disc valve for higher flows and higher pressure
- Available in 7/8" and 1 1/16" O-Ring ports

MAX OP. PRESSURE	2,975 PSI (205 BAR)
FLOW RATE (@ 1,000 RPM)	19.8 GPM (75 LPM)
DISPLACEMENT	6.10 cu.in. (100 cc.)
APPROX. WEIGHT	22 lbs. (10 Kg.)



MB050 SPREADER APPLICATIONS

- Gerotor set provides high efficiency, and long life
- Low port profile is suitable for applications with limited space
- Spool valve design offers smooth operation over a wide range of speeds and torques
- Available in 7/8" O-Ring ports or 1/2" NPT ports

MAX OP. PRESSURE	2,030 PSI (14.0 BAR)
FLOW RATE (@ 1,000 RPM)	15.8 GPM (60 LPM)
DISPLACEMENT	0.31 cu.in. (50 cc.)
APPROX. WEIGHT	11 lbs. (5 Kg.)



FLUID CONVEYANCE

HYDRAULIC HOSE & FITTINGS

BRAIDED HOSE MARATHON 2SC

- Part Number: BHEYM2K
- Specification: EN857 2SC
- Special Features: Tested to 1,000,000 impulse cycles; 5,075 PSI max. working pressure in size -08 (1/2"); 3,625 PSI max. working pressure in size -16 (1")
- Fittings: One-piece G Series

MAX WORKING PRESSURE 6,525–3,625 PSI (450–250 BAR)

REINFORCEMENT TYPE 2 High-tensile Steel Wire Braids

OPERATING TEMPS -40° F to +248° F
(-40° C to +120° C) Continuous

AVAILABLE SIZES -04 through -16 (1/4"–1")

LOGLIFE 1SC

- Part Number: BHES01K
- Specification: EN857 1SC
- Special Feature: Smooth outer cover
- Fittings: One-piece G Series

MAX WORKING PRESSURE 3,625–1,088 PSI (250–75 BAR)

REINFORCEMENT TYPE 1 High-tensile Steel Wire Braid

OPERATING TEMPS -40° F to +248° F
(-40° C to +120° C) Continuous

AVAILABLE SIZES -04 through -32 (1/4"–2")

HYPRESS 2SC

- Part Number: BFEM02K
- Specification: EN 857 2SC/SAE 100R16
- Special Features: Tested to 4000,000 impulse cycles (2x EN Standard)
- Fittings: One-piece G Series

MAX WORKING PRESSURE 5,800–2,393 PSI (400–165 BAR)

REINFORCEMENT TYPE 2 High-tensile Steel Wire Braids

OPERATING TEMPS -40° F to +248° F
(-40° C to +120° C) Continuous

AVAILABLE SIZES -04 through -32 (1/4"–2")

HYPRESS R17

- Part Number: BFSM017
- Specification: SAE 100R17
- Special Features: Isobaric hose line; 3,045 PSI max. working pressure for all sizes
- Fittings: One-piece G Series

MAX WORKING PRESSURE 3,045 PSI (210 BAR) in all sizes

REINFORCEMENT TYPE 1 High-tensile Steel Wire Braid in sizes -04 through -08 (1/4"–1/2")
2 High-tensile Steel Wire Braids in sizes -10 through -16 (5/8"–1")

OPERATING TEMPS -40° F to +248° F
(-40° C to +120° C) Continuous

AVAILABLE SIZES -04 through -16 (1/4"–1")

BRAIDED FITTINGS

MALE PIPE

PART NUMBER	HOSE SIZE	THREAD SIZE
0370G04-04	-04	-04
0370G06-06	-06	-06
0370G08-08	-08	-08
0370G12-12	-12	-12
0370G16-16	-16	-16



FEMALE JIC

PART NUMBER	HOSE SIZE	THREAD SIZE
0911G04-04	-04	-04
0911G06-06	-06	-06
0911G08-08	-08	-08
0911G12-12	-12	-12
0911G16-16	-16	-16



FEMALE JIC 90

PART NUMBER	HOSE SIZE	THREAD SIZE
0951G04-04	-04	-04
0951G06-06	-06	-06
0951G08-08	-08	-08
0951G12-12	-12	-12
0951G16-16	-16	-16



FEMALE ORFS

PART NUMBER	HOSE SIZE	THREAD SIZE
S05TG04-06	-04	-04
S05TG06-09	-06	-06
S05TG08-11	-08	-08
S05TG12-14	-12	-12
S05TG16-15	-16	-16



SPIRAL HOSE

HYPRESS 4SH



- Part Number: TFDM4SH
- Specification: EN 856 4SH
- Special Features/Approvals: ABS approval; MSHA approved outer cover; tested to 1,000,000 impulse cycles
- Fittings: One-piece X Series

MAX WORKING PRESSURE 6,090–3,625 PSI (420–250 BAR)

REINFORCEMENT TYPE 4 High-tensile Steel Wire Spirals

OPERATING TEMPS -40° F to +212° F
(-40° C to +100° C) Continuous

AVAILABLE SIZES -12 through -32 (¾"-2")

HYPRESS R13



- Part Number: TFDM013
- Specification: EN 856 R13/SAE 100R13
- Special Features/Approvals: ABS approval; MSHA approved outer cover; tested to 1,000,000 impulse cycles
- Fittings: One-piece X Series

MAX WORKING PRESSURE 5,075 PSI (350 BAR) in all sizes

REINFORCEMENT TYPE 4 High-tensile Steel Wire Spirals in sizes -12 through -16 (¾"-1")

REINFORCEMENT TYPE 6 High-tensile Steel Wire Spirals in sizes -20 through -32 (1¼"-2")

OPERATING TEMPS -40° F to +250° F
(-40° C to +121° C) Continuous

AVAILABLE SIZES -12 through -32 (¾"-2")

HYPRESS R15



- Part Number: TFDM015
- Specification: EN 856 R15/SAE 100R15
- Special Features/Approvals: ABS approval; MSHA approved outer cover; tested to 1,000,000 impulse cycles
- Fittings: One-piece X Series

MAX WORKING PRESSURE 6,090 PSI (420 BAR) in all sizes

REINFORCEMENT TYPE 4 High-tensile Steel Wire Spirals in sizes -12 and -16 (¾" and 1")
6 High-tensile Steel Wire Spirals in sizes -20 through -32 (1¼"-2")

OPERATING TEMPS -40° F to +250° F
(-40° C to +121° C) Continuous

AVAILABLE SIZES -12 through -32 (¾"-2")

SPIRAL FITTINGS

CODE 61 FLANGE

PART NUMBER	HOSE SIZE	THREAD SIZE
1250X12-12	-12	-12
1250X16-16	-16	-16
1250X20-20	-20	-20
1250X24-24	-24	-24
1250X32-32	-32	-32

CODE 61 FLANGE 90

PART NUMBER	HOSE SIZE	THREAD SIZE
1050X12-12	-12	-12
1050X16-16	-16	-16
1050X20-20	-20	-20
1050X24-24	-24	-24
1050X32-32	-32	-32

CODE 62 FLANGE

PART NUMBER	HOSE SIZE	THREAD SIZE
1300X12-12	-12	-12
1300X16-16	-16	-16
1300X20-20	-20	-20
1300X24-24	-24	-24
1300X32-32	-32	-32

CODE 62 FLANGE 90

PART NUMBER	HOSE SIZE	THREAD SIZE
1100X12-12	-12	-12
1100X16-16	-16	-16
1100X20-20	-20	-20
1100X24-24	-24	-24
1100X32-32	-32	-32



INLET/SUCTION HOSE

HY-VACUUM R4



- Part Number: TFS0004
- Specification: SAE 100R4
- For use in inlet and suction applications where vacuum is present

MAX WORKING PRESSURE	305–58 PSI (21–4 BAR)
REINFORCEMENT TYPE	2 Textile Braids + 1 Steel Helical Wire
OPERATING TEMPS	-40° F to +212° F (-40° C to +100° C)
AVAILABLE SIZES	-12 through -48 (¾"–3")

SPECIALTY & APPLICATION HOSE

THERMOPLASTIC



- Part Numbers: TFS0007, TFS0008, and TFS0018
- TFS0007: Light, flexible, and abrasion resistant; pinpricked cover
- TFS0008: Lightweight slim line construction for compact installation and flexibility; steel braid offers low volumetric expansion and optimum in length characteristics; abrasion resistant
- TFS0018: Special polyester cover for use in cold environments

MAX WORKING PRESSURE	TFS0007 TFS0008 TFS0018	3,045–1,015 PSI (210–70 BAR) 5,220–1,378 (360–95 BAR) 3,034 (210 BAR)
REINFORCEMENT TYPE	TFS0007 TFS0008 TFS0018	1 or 2 Braids of Synthetic Fiber 1 or 2 Braids of Aramid Fiber 1 or 2 Braids of Synthetic Fiber
OPERATING TEMPS	TFS0007 AND TFS0008 TFS0018	-40° F to +212° F (-40° C to +100° C); -40° F to +158° F (-40° C to +70° C) for water based fluids -67° F to +212° F (-55° C to +100° C); -57° F to +158° F (-55° C to +70° C) for water based fluids
AVAILABLE SIZES	TFS0007 AND TFS0008 TFS0018	-02 through -16 -03 through -10

P.T.F.E.



- Part Number: TF000T1
- Smooth internal P.T.F.E. thin wall hose
- Applicable Specs: SAE 100 R14
- Compatible with standard inserts

MAX WORKING PRESSURE	2,900–943 PSI (200–65 BAR)
REINFORCEMENT TYPE	1 high-tensile stainless steel (AISI 304) wire braid
OPERATING TEMPS	-94° F to +500° F (-70° C to +260° C)
AVAILABLE SIZES	-03 through -16

LONGLIFT 1SC/2SC



- Part Number: THL201K, THL202K
- No-Skive hose, high abrasion resistance
- Pressure rating exceeds standards
- Approved and released for lift truck applications
- High elasticity and flexibility at small bend radius
- Synthetic rubber internal hose, extruded whole without joints of uniform thickness

MAX WORKING PRESSURE	1SC 2SC	3,625–1,595 PSI (250–110 BAR) 6,235–3,045 PSI (430–210 BAR)
REINFORCEMENT TYPE	1SC 2SC	1 high-tensile steel wire braid 2 high-tensile steel wire braids
OPERATING TEMPS	FOR BOTH 1SC AND 2SC	-40° F to +248° F (-40° C to +120° C) continuous; -40° F to +275° F (-40° C to +135° C) intermittent; -40° F to +158° F (-40° C to +70° C) for water based fluids; +32° F to +158° F (0° C to +70° C) for water
AVAILABLE SIZES	FOR BOTH 1SC AND 2SC	-04 through -16

TREEATHLON 3SC

- Part Number: THE0T3K
- Compact design: Saves on space and weight
- No-skive crimping solution: Impulse tested to 120% of the working pressure
- NBR inner layer: Permits wide compatibility with hydraulic fluids

SPECIFICATION	Exceeds 4SP standard
MAX WORKING PRESSURE	4,568–7,250
AVAILABLE SIZES	-06 through -16

OTHER PRODUCT OFFERINGS



D.O.T. TRUCK HOSE



**HOSE ASSEMBLY/
KITTING**



LOW PRESSURE



**HOSE ABRASION
PROTECTION**



CRIMPERS



ADAPTERS



QUICK DISCONNECTS



BRASS FITTINGS

DIRECTIONAL CONTROL VALVES

V050 SERIES



- Small size, lightweight valve with versatile design configurations
- Available with 7 standard back-cap options and 6 standard control options

FLOW RATE

Nominal:	13 GPM (50 LPM)
Maximum:	16 GPM (60 LPM)

MAX PRESSURE

1-3 Sections:	5,440 PSI (375 BAR)
4-6 Sections:	5,075 PSI (350 BAR)
7-10 Sections:	4,710 PSI (325 BAR)

MAX BACK PRESSURE

365 PSI (25 BAR)

V080 SERIES



- Constructed with high-grade iron castings and nickel-plated spools for use in high-pressure applications
- Load checks and inlet relief valve are standard

FLOW RATE

Nominal:	21 GPM (80 LPM)
Maximum:	30 GPM (114 LPM)

MAX PRESSURE

1-3 Sections:	5,075 PSI (350 BAR)
4-6 Sections:	4,650 PSI (320 BAR)
7-10 Sections:	4,350 PSI (300 BAR)

MAX BACK PRESSURE

365 PSI (25 BAR)

V130 SERIES



- Internal, oil-core design allows for higher flow rates and low pressure drops in a compact package
- Tight tolerances and precision machining keep internal, spool leakages low

FLOW RATE

Nominal:	34 GPM (130 LPM)
Maximum:	55 GPM (208 LPM)

MAX PRESSURE

1-3 Sections:	5,440 PSI (375 BAR)
4-6 Sections:	5,075 PSI (350 BAR)
7-10 Sections:	4,710 PSI (325 BAR)

MAX BACK PRESSURE

365 PSI (25 BAR)

V250 SERIES



- Built to withstand extreme applications with high-pressure capabilities and high flow rates
- Work-port, relief valves, anti-cavitation valves, combination relief/anti-cavitation valves, and pilot-operated relief valves available

FLOW RATE

Nominal:	67 GPM (250 LPM)
Maximum:	75 GPM (280 LPM)

MAX PRESSURE

4,000 PSI (275 BAR)

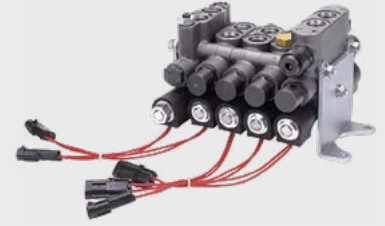
MAX BACK PRESSURE

290 PSI (20 BAR)

17 SERIES

- A parallel circuit design permits spools to operate independently or simultaneously with the lightest load receiving priority
- Stackable design allows for assembly customization
- Precision-machined spools are hard chrome-plated for maximum life and corrosion resistance

FLOW RATE	
Nominal:	12 GPM (45 LPM)
Maximum:	18 GPM (68 LPM)
MAX PRESSURE	3,500 PSI (242 BAR)
MAX BACK PRESSURE	150 PSI (10 BAR)



LOAD SENSE VALVES

L125 SECTIONAL

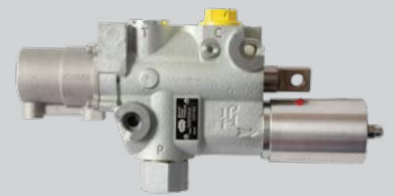
- Closed-centered, post-compensated with flow sharing sections that have local compensators, creating an efficient hydraulic control valve
- Offers both manual and electrohydraulic control options

FLOW RATE	
Nominal:	33 GPM (125 LPM)
Maximum:	
Inlet:	40 GPM (150 LPM)
Work Section:	26 GPM (100 LPM)
MAX PRESSURE	5,075 PSI (350 BAR)
STAND BY PRESSURE	200 PSI (14 BAR)
MAX BACK PRESSURE	145 PSI (10 BAR)



D242 SERIES TIPPER VALVE

The D242 Series hydraulic air shift valve is a dual-pressure control relief valve providing easy installation and system protection when using dual applications like a dump trailer in conjunction with a Walking Floor, live bottom, or ejector type trailers.



ACCESSORY VALVES

MSV SERIES SELECTOR VALVE



- A 2-position, 2-way selector valve providing a simple means of directing oil flow into 2 separate hydraulic circuits
- Can be used as a low-pressure bypass back to the reservoir
- Shifter controls are universal and fit either end of spool
- Integral mounting flange interchangeable with existing competitor products

FLOW RATE

Nominal:	60 GPM (227 LPM)
Maximum:	90 GPM (341 LPM)

MAX PRESSURE

Nominal:	2,000 PSI (138 BAR) [NPT]
Maximum:	3,000 PSI (207 BAR) [Straight Thread]

APPROX. WEIGHT

11.6 lbs. (5.3 Kg.)

PILOT OPERATED RELIEF VALVE — RV-30, RV-60



- Provides constant, maximum system pressure protection regardless of widely varying flow rates
- Can be inline or line mounted

FLOW RATE

Model RV-30:	30 GPM (114 LPM)
Model RV-60:	60 GPM (227 LPM)

PRESSURE RANGE

Model RV-30:	300–3,000 PSI (21–207 BAR)
Model RV-60:	300–3,000 PSI (21–207 BAR)

APPROX. WEIGHT

Model RV-30:	0.96 lbs. (0.4 Kg.)
Model RV-60:	1.83 lbs. (0.8 Kg.)

PRIORITY FLOW DIVIDER — PFD-30



- Provides simultaneous flow for 2 separate hydraulic circuits from a single pump
- Allows a portion of the system fluid to be directed to a function that should have priority over other functions
- Compact size

FLOW RATE

30 GPM (114 LPM)

MAX PRESSURE

3,000 PSI (207 BAR)

APPROX. WEIGHT

8 lbs. (3.6 Kg.)

HYDRAULIC CYLINDERS

SINGLE ACTING TELESCOPIC CYLINDERS

PIN-PIN

- One of the lightest cylinders on the market, which translates to greater payloads, less oil consumption, and faster dumping
- A self-bleeding design for easier installation
- Single head nut with no further adjustments needed
- Chrome-plated final stage to extend product life
- Low maintenance requirements offer many years of top performance without additional expenses

MAX PRESSURE	2,900 PSI (200 BAR)
NOMINAL BORE	5 in. Model: 2 Sizes
	6 in. Model: 7 Sizes
	7 in. Model: 14 Sizes
	8 in. Model: 14 Sizes
9 in. Model: 1 Size	
STROKE	84–285 in. (2,182–5,613 mm)
MAX LIFTING CAPACITY RANGE*	22.6–87.0 ton (201–773 kN)



* Lifting capacity range based on 2,750 PSI (189.7 BAR).

TRUNNION

- Mounting style allows for increased capacity in the dump body through a significant reduction or elimination of the dog house
- Available in both 3- and 4-stage versions
- Strict-machining tolerances, solid stop contact faces and larger overlap between stages make Muncie Power's trunnion mount cylinders some of the strongest and most stable cylinders on the market

MAX PRESSURE*	2,900 or 3,200 PSI (200 or 220 BAR)
NOMINAL BORE	3.5 in. Model: 2 Sizes
	4.5 in. Model: 3 Sizes
	5.5 in. Model: 3 Sizes
	6.5 in. Model: 4 Sizes
	7.5 in. Model: 2 Sizes
STROKE	82–194 in. (2,082–4,928 mm)
MAX LIFTING CAPACITY**	10.9–50.0 ton (97–445 kN)



* Max pressure depends on cylinder model. ** Lifting capacity range based on 2,750 PSI (189.7 BAR).

RESERVOIRS | FILTERS

HYDRAULIC RESERVOIRS

METAL ROUND



- Designed for hardworking, continuous-duty applications
- Available in aluminum for lighter weight or steel for higher heat applications
- Offered in a wide variety of sizes
- Rear ports available

VOLUMES

Aluminum (5 sizes): 25–100 gal. (94.6–1,432.9 L)
Steel (5 sizes): 25–100 gal. (94.6–1,432.9 L)

DIMENSIONS

Aluminum: 24 in. dia. x 15 in.–51 in. Long
Steel: 24 in. dia. x 15 in.–51 in. Long

APPROX. WEIGHT

Aluminum: 73–180 lbs. (33.1–81.7 Kg.)
Steel: 101–226 lbs. (45.8–102.5 Kg.)

METAL UPRIGHT



- Designed for hardworking, continuous-duty applications
- Available in aluminum for lighter weight or steel for higher heat applications
- Easy installation and accessibility

VOLUMES

Aluminum (3 sizes): 50–100 gal. (189.3–1,432.9 L)
Steel (4 sizes): 50–100 gal. (189.3–1,432.9 L)

DIMENSIONS

Aluminum: Varies
Steel: Varies

APPROX. WEIGHT

Aluminum: 77–130 lbs. (34.9–59.0 Kg.)
Steel: 150–248 lbs. (68.0–128.8 Kg.)

STEEL BOX



- Offered in a large variety of sizes from compact to mid-size
- Features multiple return ports, optional tank-top filter, and sensors
- Designed for continuous-duty applications that generate significant amounts of heat

VOLUMES

Available (7 sizes): 7–40 gal. (26.5–151.4 L)

DIMENSIONS

Varies

APPROX. WEIGHT

40–126 lbs. (18.1–57.2 Kg.)

POLYETHYLENE BOX



- Requires only 2 metal straps and saddles for easy installation on the chassis frame rail
- Preferred in intermittent-duty applications where heat build up is not an issue, but accessibility is required

VOLUMES

Available (3 sizes): 35–50 gal. (135.6–189.3 L)

DIMENSIONS

Varies

APPROX. WEIGHT

30–55 lbs. (13.6–35.0 Kg.)

POLYETHYLENE UPRIGHT

- Upright design reduces weight, eliminates risk of contamination from corrosion, improves longevity, and allows for quick and easiest installation
- Lightweight for short-duty applications where heat buildup is not an issue

VOLUMES Available (2 sizes):	50–75 gal. (189.3–283.9 L)
DIMENSIONS	Varies
APPROX. WEIGHT	67–97 lbs. (30.4–44.0 Kg.)



HYDRAULIC FILTERS

RETURN LINE

- Available in 6 sizes with high-pressure options
- An effective and economical means of maintaining system cleanliness
- Industry standard elements allow for easy maintenance
- Optional filter indicator gauge to tell when filter element needs replaced

RATING	10–25 microns (10–25 µm)
MAX FLOW RATE	24–100 GPM (90.9–378.5 LPM)
MEDIA TYPE	Microglass or Paper



TANK TOP RETURN LINE

- Available in 4 sizes
- Optional filter indicator gauge to tell when filter element needs replaced

RATING	10 microns (10 µm)
MAX FLOW RATE	24–100 GPM (90.9–378.5 LPM)
MEDIA TYPE	Microglass or Paper

HIGH PRESSURE

- Available in 2 sizes
- Filters out contamination before it reaches a valve or scores a cylinder
- Often required to meet the demands of high-horsepower, continuous-duty applications

RATING	10 microns (10 µm)
MAX FLOW RATE	24–100 GPM (90.9–378.5 LPM)
MEDIA TYPE	Microglass or Paper



WET LINE KITS

- Wide variety of applicable PTOs, pumps, and control consoles
- Hose and fittings assemblies available in numerous configurations
- A variety of reservoirs sizes, configurations, and material are available
- For more detailed component selection for your specific application, call our customer service team

(See individual product pages for specifications.)



COMBO KIT II

- The D242 Series tipper valve—a dual-position pressure relief valve—provides easy installation and protection when using dual applications
- Heavy-duty gear pump rated for long or continuous-duty cycles
- For more assistance on the Combo Kit II, call our customer service team

(See individual product pages for specifications.)



CONTROL CONSOLES

ASC2 SERIES

- LED PTO indicator light for easy dash mounting
- Push-to-connect air fittings allow easy installation for the air controller (standard in valve and air installation kit)
- Consoles have a black powder coat finish
- Some models of consoles provide a large mounting surface for extra switches, lights, valves, and more
- Symmetrical design of consoles on most models provides for installation on either side of the driver's seat with options for angle mount on the floor or dash

AIR VALVES

Automatic
Manual Kick Out,
Lower Position

PTO PUMP CONTROL

Available (6 styles):

Auto KO, Center Detent
Man KO, Center Detent
Auto KO, Center & Lower Detent
Man KO, Center & Lower Detent
Auto KO, 3 Pos. Detent
Man KO, 3 Pos. Detent

CONSOLES

Width x Length x Height
Available (6 styles):

3 in. x 3 in. x 4 in. Square
3 in. x 3 in. x 8 in. Square
3 in. x 3 in. x 13 in. Square
3 in. x 10 in. x 4 in. Rectangular
3 in. x 10 in. x 8 in. Rectangular
3 in. x 10 in. x 13 in. Rectangular
5 in. x 5 in. x 12 in. Sq.,
Cent. Faceplate
5 in. x 5 in. x 12 in. Sq.,
Offset Faceplate
Angle Mount
No Console (Dash Mount)



CABLE CONTROLS

- 3 series of heavy-load cables with rugged, no moving parts
- Attachment kits for popular valve models, ensuring smooth action while keeping contaminants out
- Works with air, cable, or solenoid shift stack valves
- May be banked together into a common console



ELECTRONIC SPREADER SYSTEMS

MESP 3016/3017



- Optional, adjustable floor mounting system
- Maximum operator convenience: automatic and manual mode
- System ability to control a spinner and auger/conveyor setup

MAX FLOW RATE	40 GPM (151.4 LPM)
ADJUSTABLE RELIEF	3,000 PSI MAX (207 BAR)

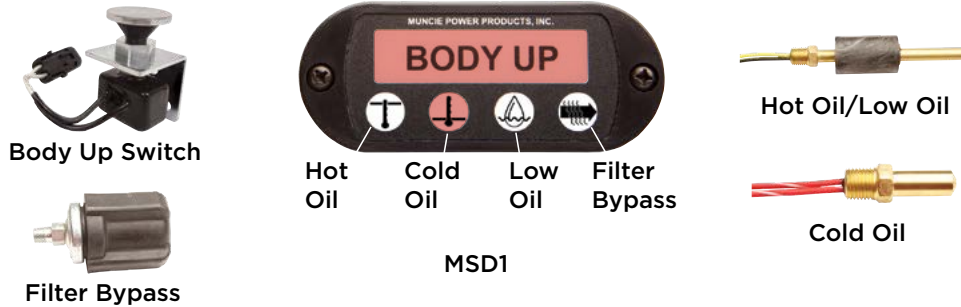
MESP 3020



- Compatible with all spreaders (V-box, tailgate spreaders, etc.)
- Maximum operator convenience: automatic and manual mode
- Functionality includes hoist, spinner, and auger/conveyor for Class 5 trucks

MAX FLOW RATE	20 GPM (75.7 LPM)
ADJUSTABLE RELIEF	3,000 PSI MAX (207 BAR)
ADJUSTABLE SPREADER RELIEF	1,500 PSI (103 BAR)

HYDRAULIC INDICATOR DISPLAYS & SWITCHES



MUNCIE START®

The Muncie Start is an electronically controlled, modulated clutch engagement system that eliminates torque spikes through the power take-off, truck drivetrain, and mounted auxiliary equipment upon startup for high-inertia loads. Clutch shift power take-offs that can utilize the Muncie Start are the A20 Series, CS40/41 Series, F20 Series, F22 Series, and FR6Q Series.



SPD-2000 SERIES

The SPD-2000 Series protection device offers over-speed protection and interface for a wide range of interlock devices. Accepting both RPM and MPH inputs, the SPD-2000 Series accepts additional safety switch inputs such as pressure switches, neutral switches, oil levels, temperature switches, and others. The SPD-2000 Series can be mounted in the cab or engine compartments. Use this system protection device with clutch shift PTOs, clutch pumps, the Power-Miser, and the Powr-Pro.



DC POWER PACKS

- Steel reservoirs come in 6 sizes and used for higher heat applications
- Translucent, polyethylene reservoirs come in 5 sizes
- Large selection of directional valve choices
- Horizontal and vertical mounting capabilities
- Provides hydraulic power for light-duty applications
- 60-micron suction line strainer and 40-micron breather cap standard
- Generally used on single-axle chassis where the PTO aperture is inaccessible or not available
- A corded, push button remote control is standard



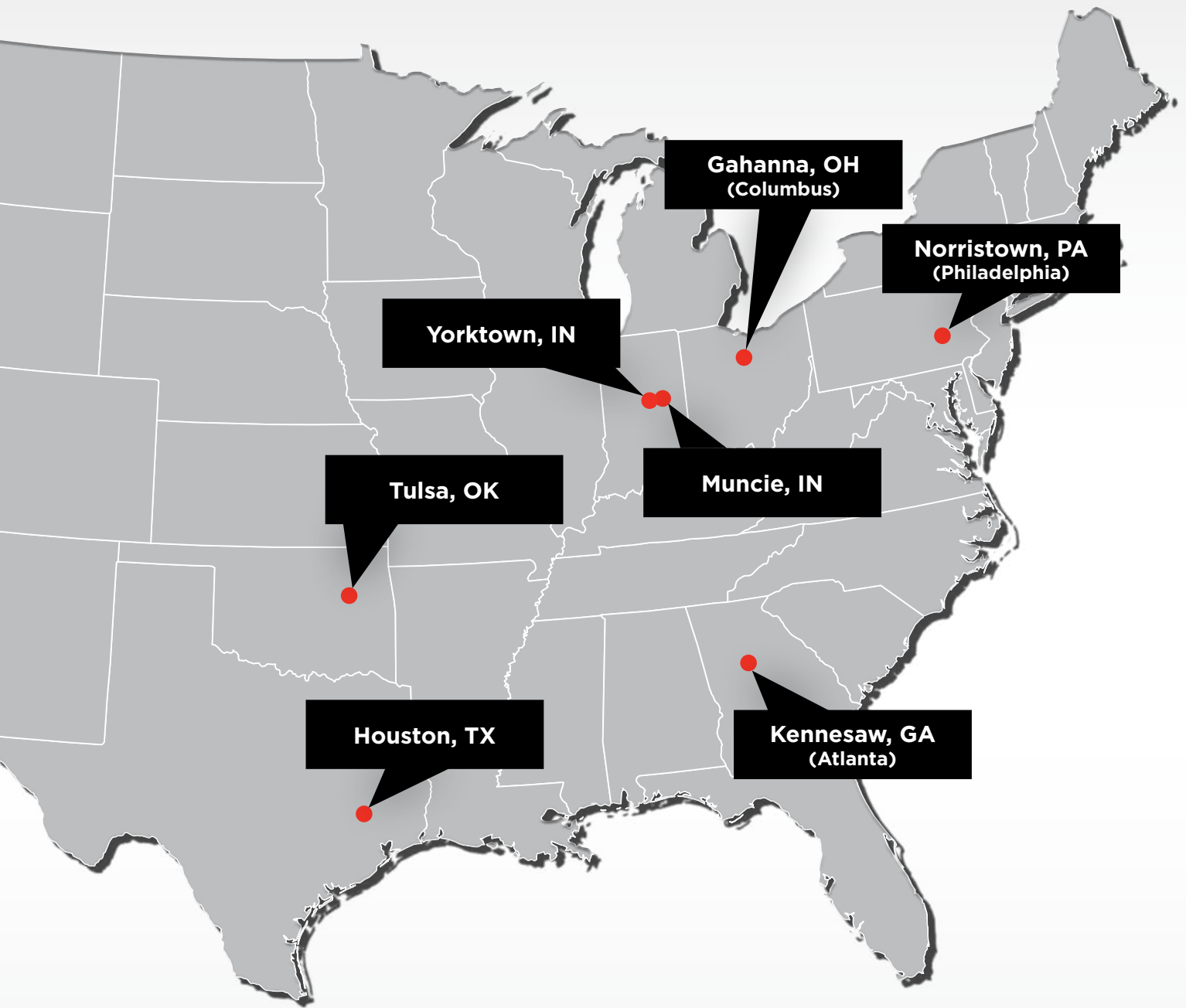
LOCATIONS

On the map to the right, you can view our various locations across the United States, including our distribution and pump centers.

Muncie Power has a large network of independent distribution partners with stocked parts ready to support numerous warehouse locations across the United States.

Use the QR code to find a trusted distribution partner near you.





Gahanna, OH
(Columbus)

Norristown, PA
(Philadelphia)

Yorktown, IN

Muncie, IN

Tulsa, OK

Houston, TX

Kennesaw, GA
(Atlanta)

M-POWER

The online M-Power Specification Software allows you to go through a step-by-step process to easily configure a PTO, pump, cylinder, valves, and more. You can also crossover a competitor's product to a Muncie Power model. Spec'ing out a product gives you the ability to view pricing and save your configuration, along with other options—all on your own time.

Access the
M-Power
Specification
Software and
start configuring
your products.



TRAINING

If you are unsure how to properly configure our products or wish to learn more about our products, we offer several training options to help you become more knowledgeable. Our training opportunities include an online portal to learn on your own time, Muncie Power's Product and Application School classes (held a few times a year at Muncie Power locations), and custom training specific for your team.

Find training
opportunities
and offered
classes.



CALCULATORS

To determine your product's specifications, you can take advantage of our easy to use calculators online to help calculate PTO output speed, RPM, reservoir volume, torque, and more. These calculators and more resources are available to find the appropriate products to pair together for a successful hydraulic system.

View our useful
formulas and
calculators.



To get the most up-to-date product literature, parts breakdowns, and more resources, visit us online



MUNCIEPOWER.COM



Muncie[®]
Power
Products



201 EAST JACKSON STREET | MUNCIE, INDIANA 47305
800-367-7867 | WWW.MUNCIEPOWER.COM